

# 5 Note Organ assembly instructions

## Install the components in the following order

- Resistors - 7 (use the lead bending tool - 10mm)
- Ceramic Capacitor
- Switches - 5 small and 1 large
- IC Socket - 1
- Electrolytic capacitor

Resistor



Ceramic Capacitor



Electrolytic Capacitor

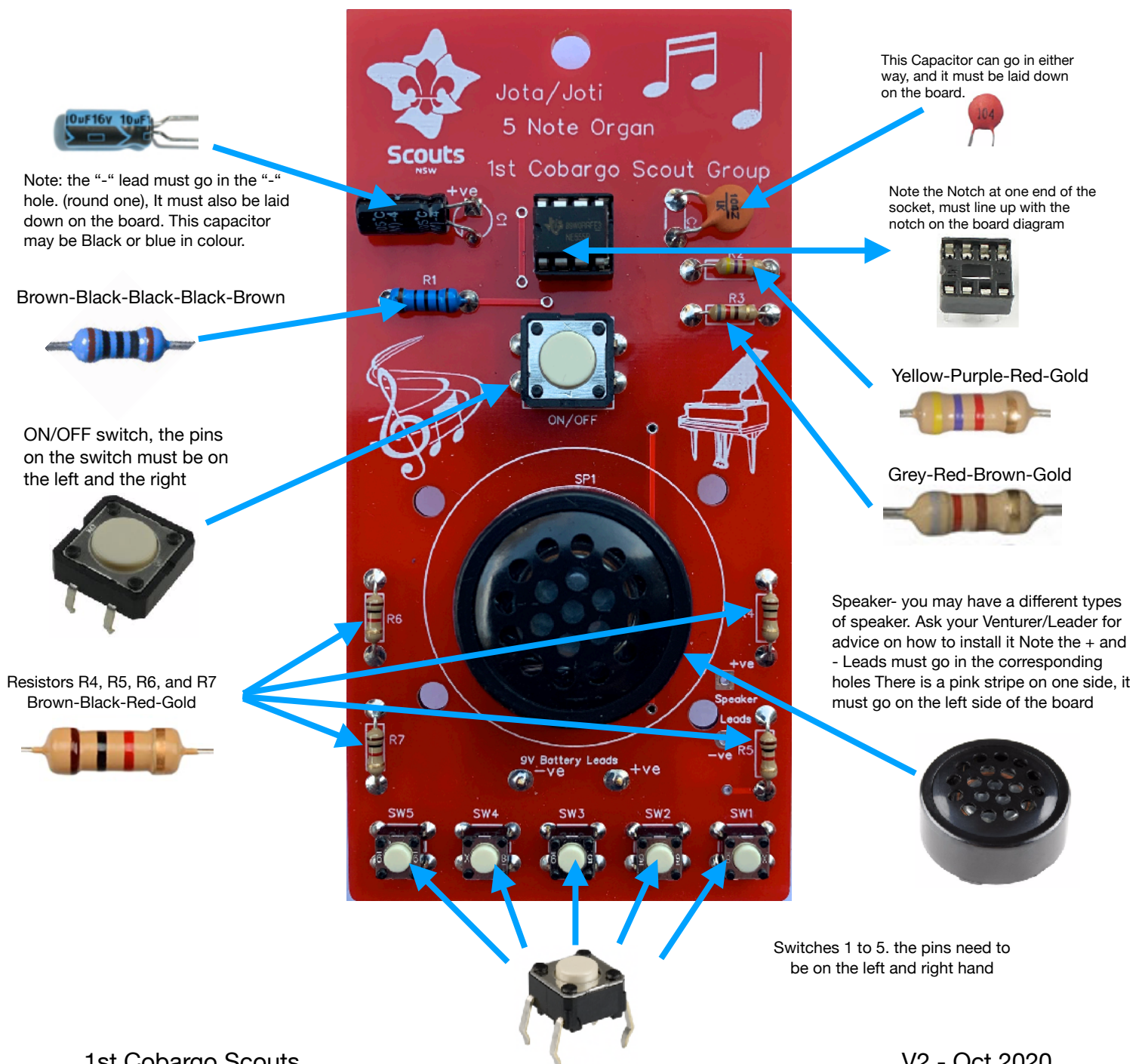


IC Socket



## Get your soldering and component placement checked before proceeding

- Speaker - make sure that the pink stripe on the side is on the left side of the board.
- Battery socket - this is installed on the rear of the board, your leader will check your soldering 1st, and show you how to install it as there are a few different versions.
- 555 IC and Battery - You will be given this when your soldering has been checked



# 5 Note Organ assembly instructions

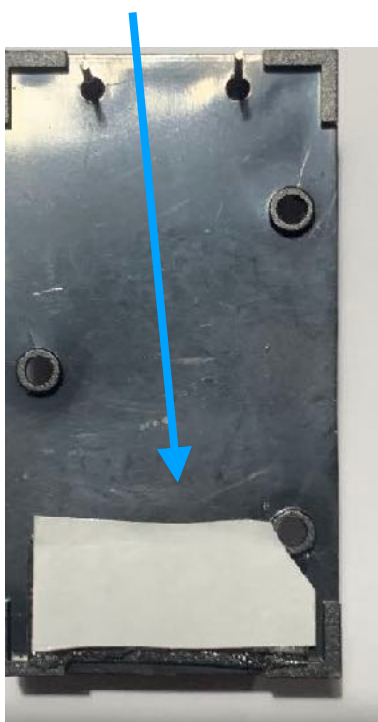
## Speaker

Ensure that the pink stripe on the speaker is on the left side of the board



## Battery holder

Take the cover tape of the double sided tape before putting the battery socket into the board.



## Name and Group

Write your name and Group on the back in the space provided

