

Do not take this sheet, please leave it on the table

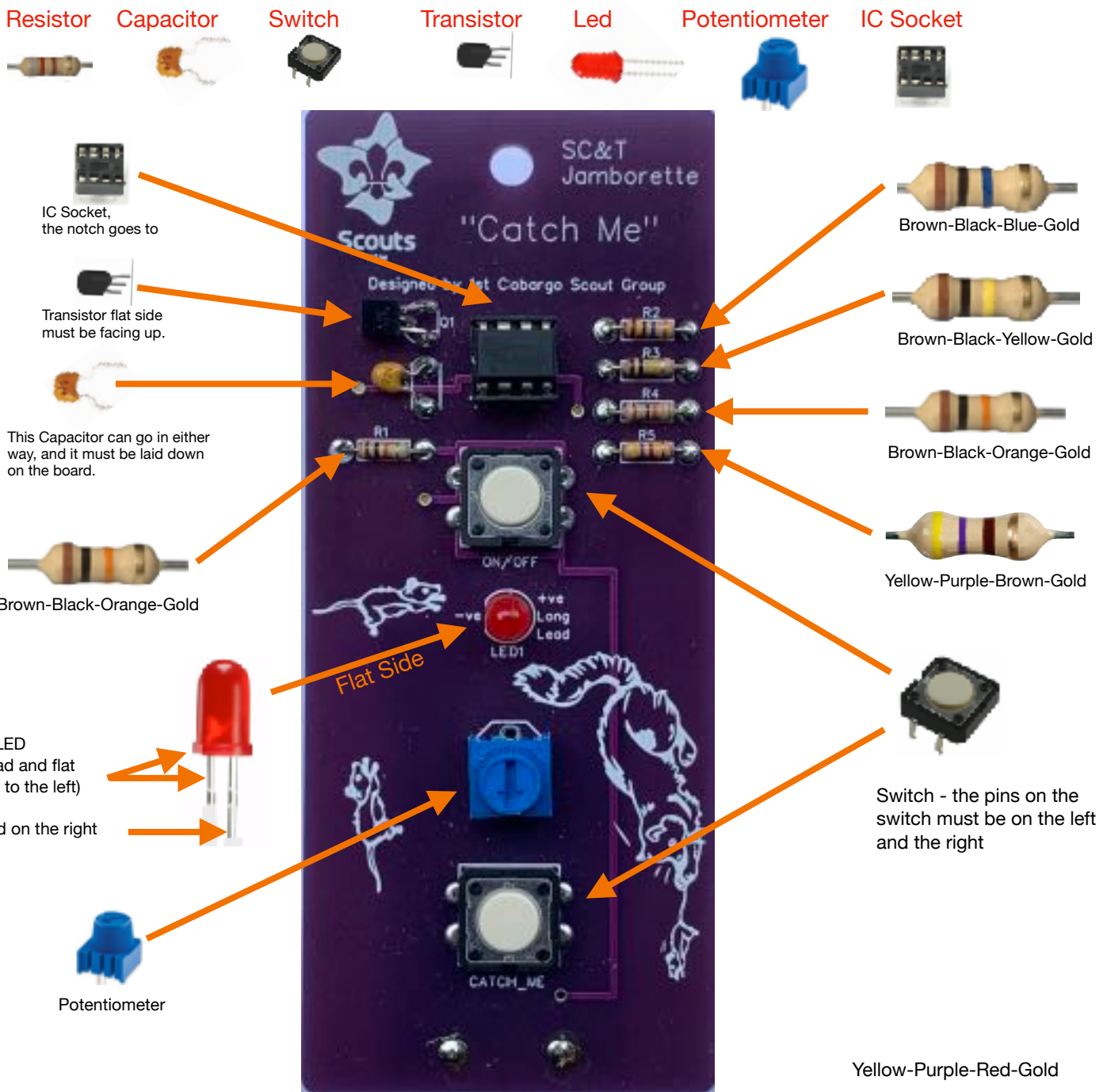
# Catch Me assembly instructions

## Install the components in the following order

1. Resistors - 5 (use the lead bending tool - 10mm)
2. Ceramic Capacitor
3. Switches - 2
4. IC Socket -1
5. Transistor
6. LED
7. Potentiometer

## Get your soldering and component placement checked before proceeding

8. Get a leader to help you install the 555 IC, and test your board to make sure it works before soldering in the Battery socket.
9. Battery socket - this is installed on the rear of the board, - take off the double sided tape 1st.
10. Write your name and Scout Group on the back in the space provided.
11. Ask a leader to put the amber coloured Kapton tape on the back for you



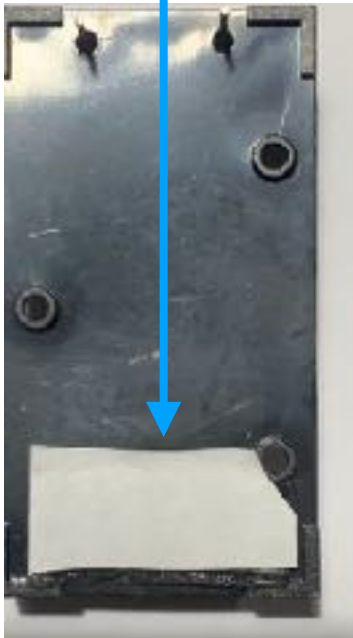
Do not take this sheet, please leave it on the table

## Catch Me assembly instructions

NOTE : Do not solder in your Battery holder until your board has been tested, as they are difficult to remove if something underneath needs to be fixed.

### Battery holder

Take the cover tape of the double sided tape before putting the battery socket into the board.



### Name and Group

Write your name and Group on the back in the space provided



### Kapton tape

The tape will help protect your fingers from any sharp solder joints and also protect the circuit from static electricity, that will stop it working correctly.