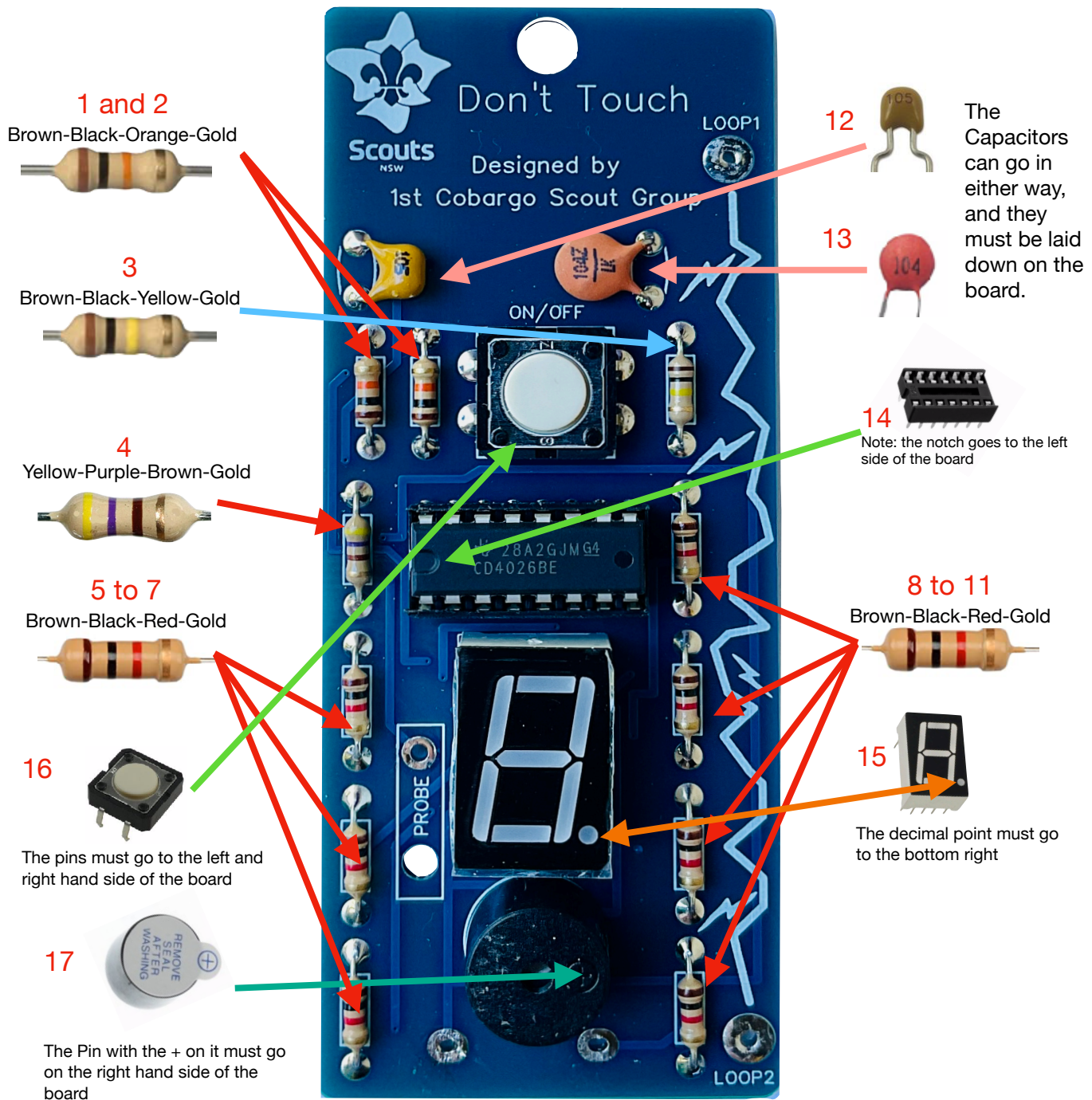


Leave the instructions on the table , do not take them with you.

Don't Touch assembly instructions

Red numbers represent the order in which the components should be installed.



Please turn over the page for the rest of the installation instructions.

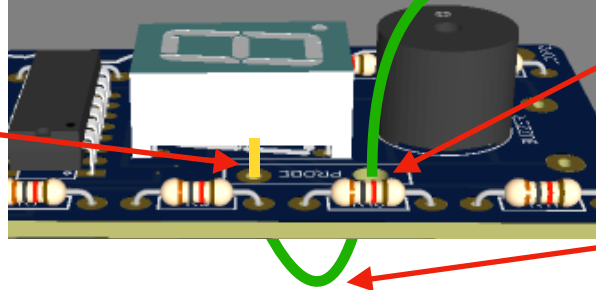
Don't Touch assembly instructions

18 Probe

Start here

STEP - 1. The wire goes down this hole from the top side of the board

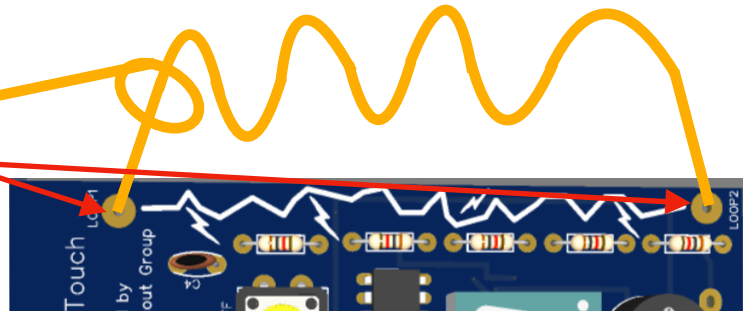
STEP - 3. The wire then comes up through this hole, and gets soldered in on the top side of the board



STEP - 2. It then goes under the Board

19 Loop

- Feed the Brass wire through the end of the probe.
- Solder each end of the Brass wire into the board.
- Bend the loop of Brass wire into a shape of rounded peaks and valleys.



20 Ask a leader to check your soldering, plug in the IC and test the board. If all is ok, they will give you the Battery holder and batteries.

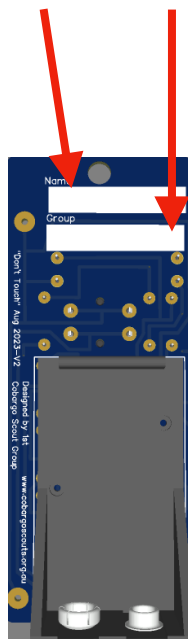
21 Battery holder

Take the cover tape of the double sided tape before putting the battery socket into the board.



22 Name and Group

Write your name and Group on the White sections on the back



Protective tape

Ask a leader to put the protective tape over the exposed pins on the front and the back.

