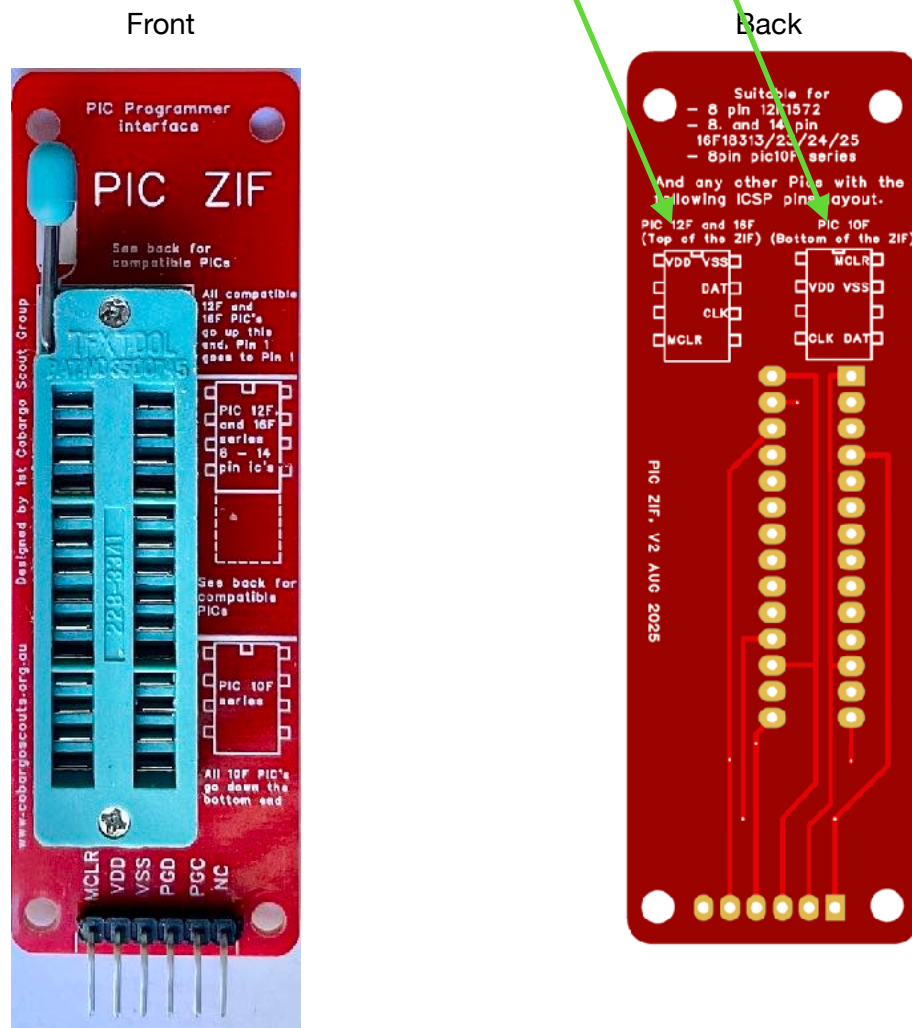


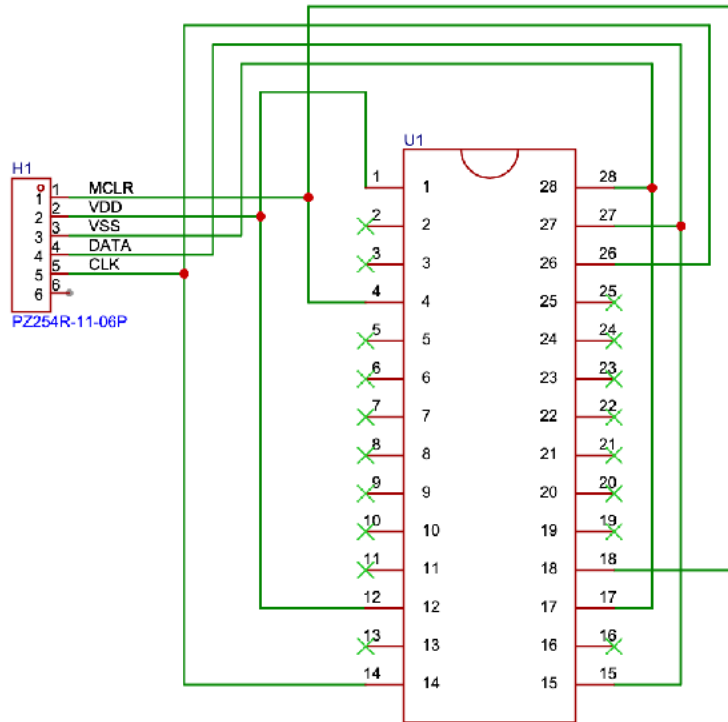
# PIC ZIF Reference Guide

The PIC ZIF is a very simple to use ZIF programming socket when Programming PICS in bulk. There is no strapping required. It only takes PIC12F1572, PIC16F18 (8-14 pin) series and PIC10F series PICs. These are the main ones I will be using for projects.

It can take other PICS as long as the programming pins conform to the pinouts, see the back of the board for details.



# Circuit Diagram



## Parts List

Other than the board, only 2 parts are required

1) **28 pin Narrow ZIF socket**

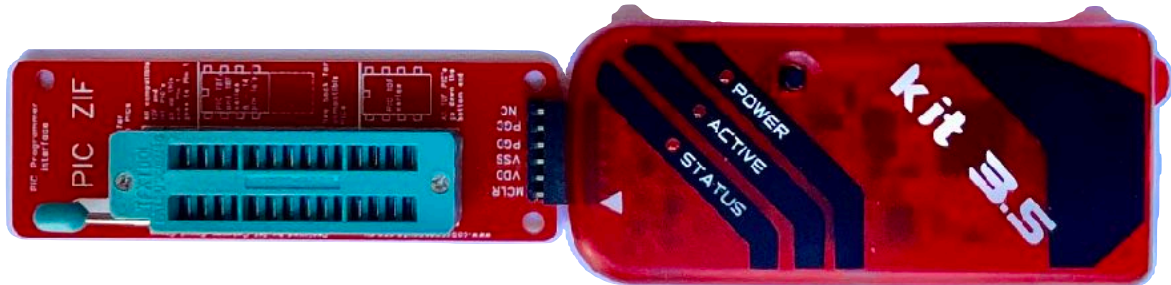
[https://www.aliexpress.com/item/1005006297195657.html?spm=a2g0o.order\\_list.order\\_list\\_main.5.7e0f1802cq8kui](https://www.aliexpress.com/item/1005006297195657.html?spm=a2g0o.order_list.order_list_main.5.7e0f1802cq8kui)

2) **Right angle single row 2.54mm Pin header (need to cut it to 6 pins)**

[https://www.aliexpress.com/item/1005005898930306.html?spm=a2g0o.order\\_list.order\\_list\\_main.30.7e0f1802cq8kui](https://www.aliexpress.com/item/1005005898930306.html?spm=a2g0o.order_list.order_list_main.30.7e0f1802cq8kui)

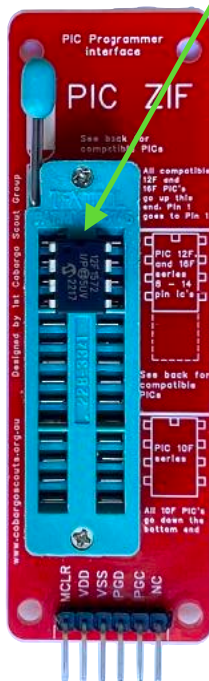
# Using the PIC ZIF

The PIC ZIF, plugs straight into a PickKit, or you can use a cable

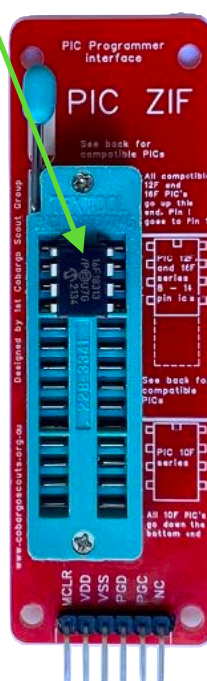


All the IC's must have the notch facing towards the top of the board

PIC 12F1572  
placed at the top



PIC 16F18 series  
placed at the top



PIC 10F series  
placed at the bottom

